

DEVELOPMENT NOTES

South Loop condo high-rise showing 14 models

By Seka Palikuca
TRIBUNE REPORTER

Two penthouses are among the 14 decorated models open for touring at 1720 S. Michigan Ave., a 33-story new-construction condominium building in the South Loop.

There are nearly 25 condos available for immediate occupancy at the 498-unit tower, which is nearing completion. The FHA-insured project allows qualified buyers to purchase with a down payment as low as 3.5 percent.

The models are base-priced from \$199,900 for a one-bedroom, \$249,900 for a two-bedroom, and \$379,900 for a three-bedroom. The 33rd-floor penthouses offer 14-foot floor-to-ceiling windows.

Nine residences are built per floor on the first seven levels. The lobby levels includes 8,000 square feet of retail and commercial space, including a planned restaurant.

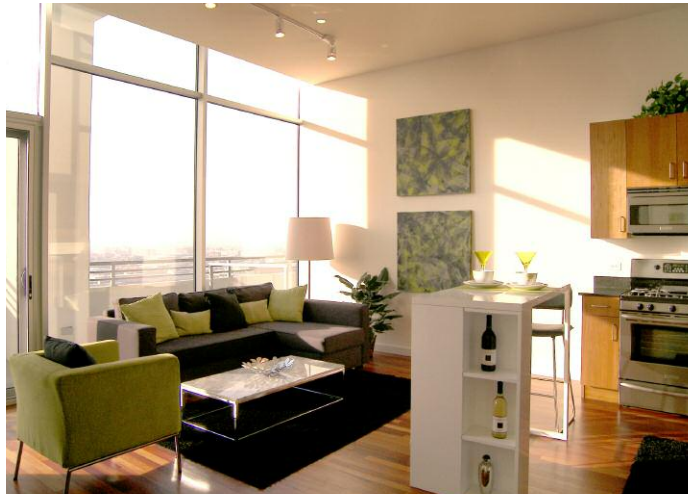
The building's six-level garage is behind the tower façade. Parking is available for \$36,900.

Building amenities include a 24-hour doorman, bicycle storage room, dog run and garden area.

Models are open 11 a.m. to 6 p.m. Monday through Friday and noon to 5 p.m. Saturday and Sunday. For information, call 312-376-0600 or visit 1720michigan.com.

Carillon Club

Two Alpine Series condo models just opened for viewing at the Carillon Club in



The 903-square-foot penthouse model at 1720 S. Michigan Avenue is a one-bedroom plan with a terrace. It is priced at \$319,900.

Naperville, a gate-guarded active adult community.

The condos are priced from the \$150,000s with a limited-time incentive on one-bedroom plans.

Attractions at Carillon Club include a clubhouse with indoor and outdoor pools and a hydrotherapy spa, an exercise room, locker rooms, an arts and crafts room, computer lab, billiard room and library. There is a gathering room with fireplace. The development is set among several lakes, picnic areas, nature trails with fitness stations, a three-hole golf course, tennis and bocce ball courts and a playground for visiting children. Security includes a roving patrol at night.

Five floor plans range from 960 to 1,370 square feet and include one-level living, indoor heated parking, in-unit laundry and private decks.

Sales hours are 10 a.m. to 5 p.m. daily (except noon to 5 p.m. Friday). For information, call 847-984-4857, or visit mycambridgehome.com.

Radcliffe Place

Sales are underway at Radcliffe Place Townhomes in Tinley Park, planned for 20 two-story residences.

"The goal from the start was to give our homeowners more inventive floor plan options than are typically available in a townhome community and to provide choices that would meet current interest," said Tina Plastiak, sales manager at Radcliffe Place.

All four floors plans are available for 45-day delivery. They include a brick patio, a two-car garage, full basement, landscaped lot with underground sprinklers and brick facade with stone detailing. They all have 2-1/2 baths and two or three bedrooms starting at \$327,700.

To visit, take LaGrange Road to 179th Street and head east to Iroquois near 82nd Avenue. For more information, call 708-614-0505 or visit gallagherandhenry.com.

spalikuca@tribune.com